

Memorandum

To: Andrew Prophete (National Grid NY)

From: Brian Skelly

Copy to: Richard Dana and R. Scott Deyette (NYSDEC)
Chris Schroer (EA Engineering)
Andrew Rizk (Louis Berger)
Stephanie Selmer (NYSDOH)
Dave Boram and Thor Helgason (de maximis)
Ted Leissing (National Grid NY)
Shail Pandya (AECOM)
Ronell Marshall and Clayton John (GEI Consultants, Inc.)

Date: November 27, 2012

Regarding: Weekly Community Air Monitoring Report
Clifton Former MGP Site - Operable Unit 2 (OU-2)
November 17, 2012 through November 23, 2012

Dear Andrew:

This report includes a summary of data collected during implementation of the Community Air Monitoring Plan (CAMP) at the Clifton Former MGP Site Operable Unit 2 (OU-2) in Staten Island, New York. Data collected are discussed in relation to remediation activities that occurred between November 17, 2012 and November 23, 2012.

There were no fifteen-minute exceedances of the Total Volatile Organic Compounds (TVOC), Particulate Matter (PM-10) [dust], or odor action levels associated with ground intrusive site activities during this reporting period. There were exceedances for PM-10 above the alert level at an upwind station during working hours and during non-working hours attributed to offsite activities. The tables and figures accompanying this report summarize air monitoring results related to the action levels described by the CAMP Work Plan (AECOM, 2011 and GEI, 2012).

The following information is summarized in this report:

- Site construction activities
- Daily maximum 15-minute average concentrations of TVOC and PM-10 (dust) at each fixed station
- Elevated concentrations (if any)
- Meteorological data

Site Construction Activities

Construction activities during this reporting period included:

- Excavated in Temporary Fabric Structure (TFS)
- Deconned dump trucks
- Loaded out soil from TFS
- Tarped dump trucks
- Relocated bin-blocks

Data collection

Real-time fixed station monitoring for TVOC and PM-10 (dust) was performed on the OU-2 site perimeter at six locations (FAM#1 through FAM#6. Four AirLogics Classic stations equipped with gas chromatographs (GCs) were operated at FAM#2, FAM#3, FAM#4, and FAM#5 and two AirLogics Light stations were operated at FAM#1 and FAM#6.

Table 1 summarizes the target concentrations for action levels and Site Conditions described by the CAMP. Table 2 provides a daily summary of maximum fifteen-minute average ambient air concentrations from each station. The daily reports appended to this report depict more detailed and time-specific comparison of upwind and downwind measurements and site activities that is needed to determine the Site Condition.

Upwind and downwind ambient air verification samples were collected on November 21, 2012. Meteorological data collected at the on-site weather station are included in this report as Figures 1 through 4 which show a directional wind rose for the period and temperature, relative humidity, and wind speed time series for the period.

If you have any questions regarding the information in this report, please contact me.

References

AECOM (2011). Appendix A of CERP Community Air Monitoring Plan (CAMP) Former Manufactured Gas Plant Operable Unit - 2 Remediation. Clifton, New York. August.

GEI Consultants, Inc (2012). Community Air Monitoring Plan: Clifton Former Manufactured Gas Plant Site – Operable Unit 2, Borough of Staten Island, New York. February.

New York State Department of Environmental Conservation (2010). DER-10 / Technical Guidance for Site Remediation and Investigation. Washington: Division of Environmental Remediation, December. Appendix 1-A. May.

Table 1 - Action Levels and Site Conditions
Community Air Monitoring Program
Clifton Former MGP Site Operable Unit 2
Borough of Staten Island, New York

	Alert Level	Action Level	Site Condition 1	Site Condition 2	Site Condition 3
TVOC (15-minute)	3.7 ppm	5.0 ppm	< 3.7 ppm	≥ 3.7 ppm, < 5.0 ppm	≥ 5.0 ppm
TVOC (1-minute)	NA	25 ppm	< 25 ppm	NA	≥ 25 ppm
PM-10 (15-minute)	100 ug/m ³	150 ug/m ³	< 100 ug/m ³	≥ 100 ug/m ³ , < 150 ug/m ³	≥ 150 ug/m ³
Odor (15-minute)	Odors / Complaints	NA	No odors	NA	3 (n-butanol)
HCN (15-minute)	Visual Detection	NA	< 0.6 ppm	≥ 0.6 ppm (4-gas meter)	≥ 0.6 ppm (Draeger tube)
Naphthalene (15-minute)	NA	NA	< 440 ug/m ³	≥ 330 ug/m ³ , < 440 ug/m ³	≥ 440 ug/m ³

Notes:

¹ Alert Levels are not established by the NYSDOH or NYSDEC and are internally established concentration levels for total volatile organic compounds. Alert Levels are set below the levels established by the NYSDOH so that actions can be taken prior to exceeding a NYSDOH threshold. An Alert Level serves as a screening tool to trigger contingent measures if necessary, to assist in minimizing off-site transport of contaminants during remedial activities

² Response Levels and Action Levels are not defined in Appendix 1A of the New York State Department of Environmental Conservation *DER-10 / Technical Guidance for Site Investigation and Remediation* (NYSDEC, 2010)

ug/m³ - micrograms per cubic meter

ppmv - parts per million by volume

TVOC - total volatile organic compounds

PM-10 - particulate matter (i.e. dust) less than 10 microns in diameter

HCN - hydrogen cyanide

NA - not applicable

Table 2. Daily Maximum 15-Minute Average Concentrations of TVOC and PM-10
 Community Air Monitoring Program
 Clifton Former MGP Site Operable Unit 2
 Borough of Staten Island, New York

Date	TVOC						PM-10					
	(ppm)						(ug/m ³)					
	FAM#1	FAM#2	FAM#3	FAM#4	FAM#5	FAM#6	FAM#1	FAM#2	FAM#3	FAM#4	FAM#5	FAM#6
11/17/2012	ND	ND	ND	ND	ND	ND	ND	ND	ND	ND	ND	ND
11/18/2012	ND	ND	ND	ND	ND	ND	ND	ND	ND	ND	ND	ND
11/19/2012	1.6	0.5	0.1	2.6	0.1	0.4	32	11	5	11	28	73
11/20/2012	0.2	0.1	0.1	0.1	0.1	0.7	51	90	10	15	31	120
11/21/2012	0.2	0.3	0.4	0.2	0.2	0.7	59	26	10	22	66	85
11/22/2012	0.1	0.2	0.1	0.1	0.1	0.6	71	22	8	12	26	121
11/23/2012	0.1	0.2	0.1	0.1	0.1		58	22	9	15	37	121
Average	0.4	0.3	0.2	0.6	0.1	0.6	54	34	8	15	38	104
Maximum	1.6	0.5	0.4	2.6	0.2	0.7	71	90	10	22	66	121

Notes:

FAM - fixed air monitoring station location

ug/m³ - micrograms per cubic meter

ppmv - parts per million by volume

TVOC - total volatile organic compounds

PM-10 - particulate matter (i.e. dust) less than 10 microns in diameter

ND - No data

Figures 1-4
Meteorological Data
Weekly Community Air Monitoring Report
Clifton Former MGP Site Operable Unit 2
Borough of Staten Island, New York

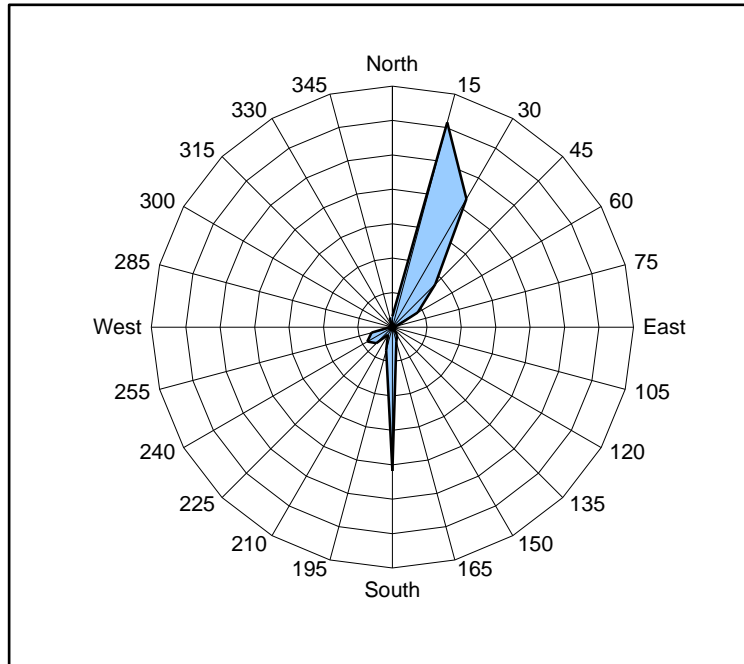


Figure 1. Wind rose for the period 11/17/12 through 11/23/12 collected during CAMP implementation at the Clifton Former MGP Site - Operable Unit 2. Wind direction data used to create the wind rose were calculated from 1-minute data.

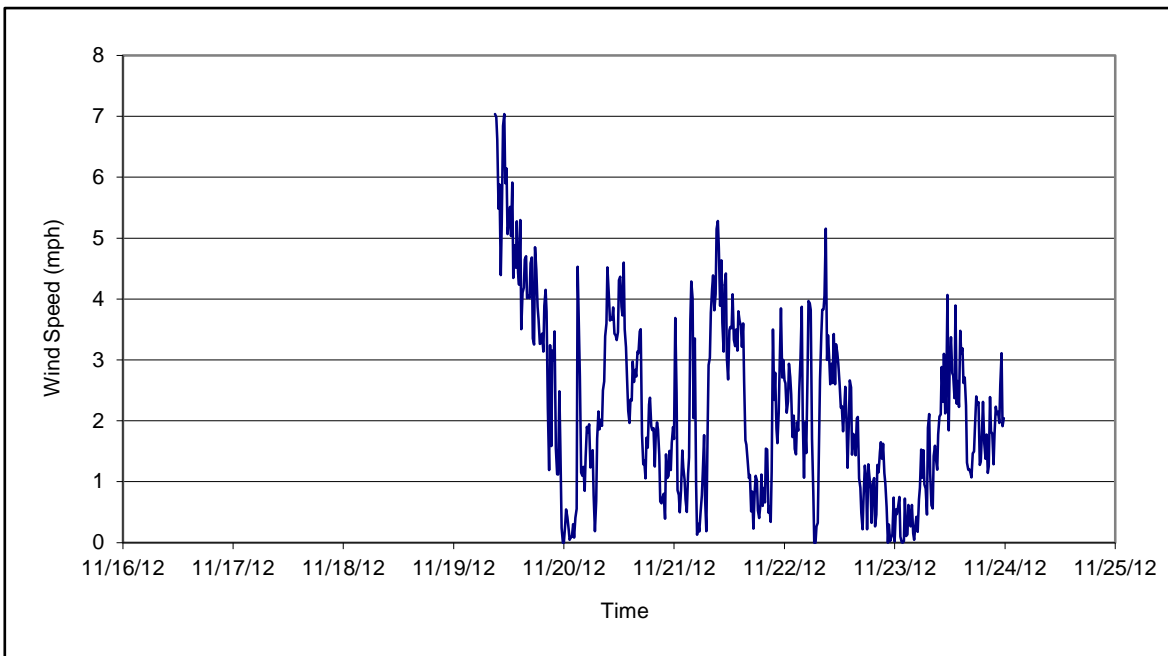


Figure 2. Wind speed for the period 11/17/12 through 11/23/12 collected during CAMP implementation at the Clifton Former MGP Site - Operable Unit 2. Data are 15-minute averages.

Figures 1-4
Meteorological Data
Weekly Community Air Monitoring Report
Clifton Former MGP Site Operable Unit 2
Borough of Staten Island, New York

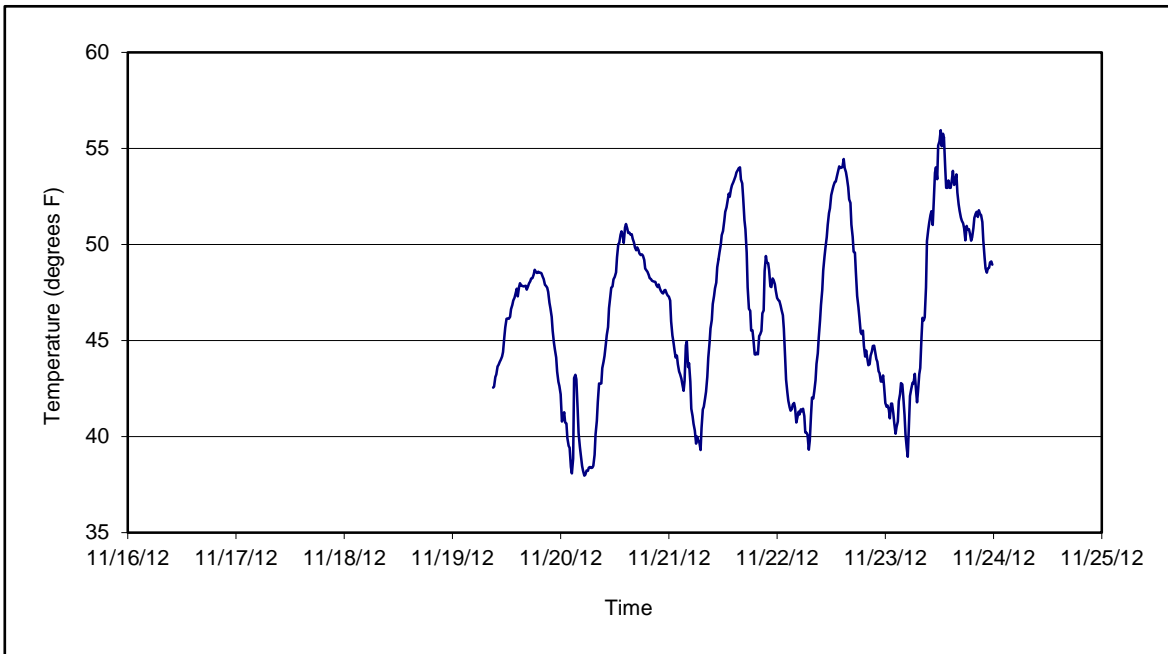


Figure 3. Temperature for the period 11/17/12 through 11/23/12 collected during CAMP implementation at the Clifton Former MGP Site - Operable Unit 2. Data are 15-minute averages.

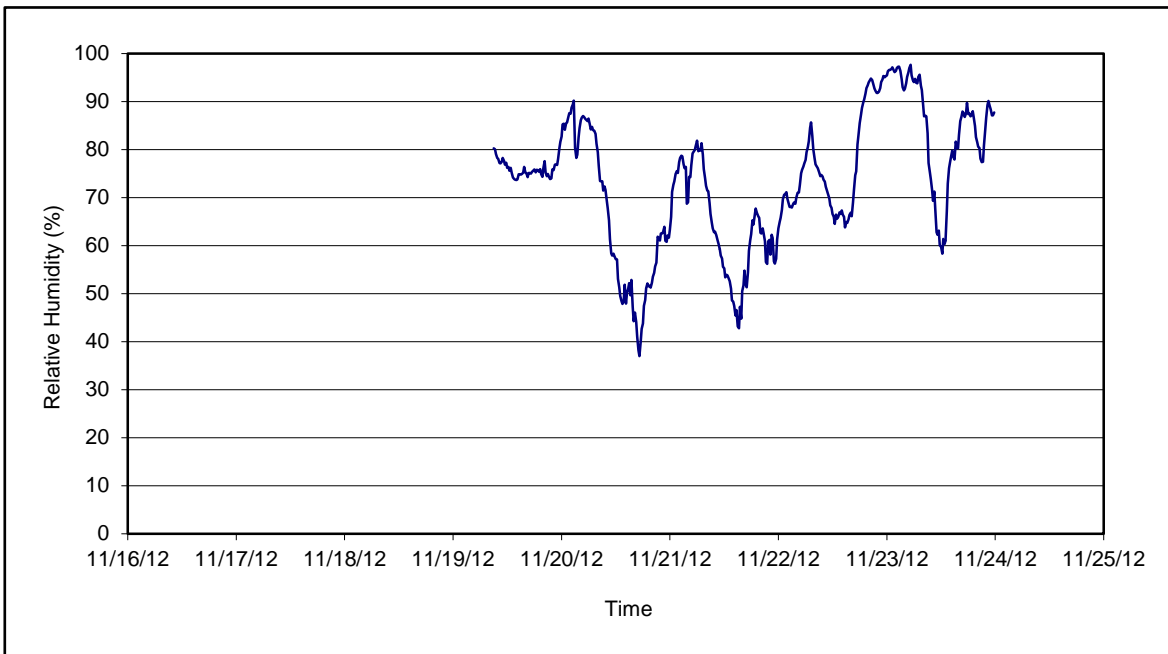


Figure 4. Relative humidity for the period 11/17/12 through 11/23/12 collected during CAMP implementation at the Clifton Former MGP Site - Operable Unit 2. Data are 15-minute averages.

Daily Field Report
Community Air Monitoring Program
Clifton Former MGP Site Operable Unit 2
Borough of Staten Island, New York

System Operations					General Observations																							
Sampling Date 11/19/2012 System Start Time continuous System Stop Time continuous Total Hrs Monitored 24 System Calibrations Ok (Time/Status) 0734-0922					General Weather Conditions: Clear - - 41°F - -52°F General Description of Site Activities: Health & Safety Meeting Continuous Air Monitoring Excavated in Temporary Fabric Structure (TFS) Deconned dump trucks Loaded out soil from TFS Tarped dump trucks																							
Date	Alert Trigger	Station	Start Time	End Time	# of 15-min Periods	Wind Dir.	Upwind/ Downwind	Upwind Station(s)	15-Minute Downwind-Upwind Concentration Min** Max**		Site Condition	Site Activity During the Period (if applicable)	Actions Taken															
11/19/2012	No exceedances												None taken															
Comments:																												
<table style="width: 100%; border: none;"> <tr> <td style="width: 30%;"></td> <td style="width: 20%;">PM-10 (15-min)</td> <td style="width: 20%;">TVOC (15-min)</td> <td style="width: 20%;">TVOC (1-min)</td> <td style="width: 20%;">Odor Intensity (15-min)</td> </tr> <tr> <td>Alert Limit:</td> <td>100 ug/m³</td> <td>3.7 ppm</td> <td>-</td> <td>-</td> </tr> <tr> <td>Action Limit:</td> <td>150 ug/m³</td> <td>5.0 ppm</td> <td>25 ppm</td> <td>3 (n-butanol scale)</td> </tr> </table>															PM-10 (15-min)	TVOC (15-min)	TVOC (1-min)	Odor Intensity (15-min)	Alert Limit:	100 ug/m ³	3.7 ppm	-	-	Action Limit:	150 ug/m ³	5.0 ppm	25 ppm	3 (n-butanol scale)
	PM-10 (15-min)	TVOC (15-min)	TVOC (1-min)	Odor Intensity (15-min)																								
Alert Limit:	100 ug/m ³	3.7 ppm	-	-																								
Action Limit:	150 ug/m ³	5.0 ppm	25 ppm	3 (n-butanol scale)																								
Notes:																												
* Wind directions are presented by octant (i.e. N, NE, E, SE, S, SW, W, NW). ** Upwind minus downwind concentrations are a time specific comparison. FAM - Fixed Air Monitoring station location ug/m ³ - micrograms per cubic meter ppmv - parts per million by volume					PM-10 - particulate matter (i.e. dust) less than 10 microns in diameter TVOC - total volatile organic compounds NA - not applicable ND - no data available									Field Representative: R. Marshall Date: 11/19/2012														



Daily Field Report
Community Air Monitoring Program
Clifton Former MGP Site Operable Unit 2
Borough of Staten Island, New York

System Operations					General Observations									
Sampling Date 11/20/2012 System Start Time continuous System Stop Time continuous Total Hrs Monitored 24 System Calibrations Ok (Time/Status) 0657-0905					General Weather Conditions: Clear - - 41°F - -50°F General Description of Site Activities: Health & Safety Meeting Continuous Air Monitoring Excavated in Temporary Fabric Structure (TFS) Deconned dump trucks Loaded out soil from TFS Tarped dump trucks									
Date	Alert Trigger	Station	Start Time	End Time	# of 15-min Periods	Wind Dir.	Upwind/ Downwind	Upwind Station(s)	15-Minute Downwind-Upwind Concentration Min** Max**		Site Condition	Site Activity During the Period (if applicable)	Actions Taken	
11/20/2012	PM-10	FAM#6	12:12	12:21	10	N	UW	N/A	101	120	1	Off site activity	Construction manager was notified No action taken	
Comments:														
Alert Limit:					PM-10 (15-min) 100 ug/m ³		TVOC (15-min) 3.7 ppm		TVOC (1-min) -		Odor Intensity (15-min) -			
Action Limit:					150 ug/m ³		5.0 ppm		25 ppm		3 (n-butanol scale)			
Notes:														
* Wind directions are presented by octant (i.e. N, NE, E, SE, S, SW, W, NW).						PM-10 - particulate matter (i.e. dust) less than 10 microns in diameter								
** Upwind minus downwind concentrations are a time specific comparison.						TVOC - total volatile organic compounds								
FAM - Fixed Air Monitoring station location						NA - not applicable								
ug/m ³ - micrograms per cubic meter						ND - no data available								
ppmv - parts per million by volume								Field Representative: R. Marshall				Date: 11/20/2012		
												Page 1 of 1		



**Daily Field Report
Community Air Monitoring Program
Clifton Former MGP Site Operable Unit 2
Borough of Staten Island, New York**

System Operations					General Observations									
Sampling Date	11/21/2012	General Weather Conditions:												
System Start Time	continuous	Clear - - 40°F - -52°F												
System Stop Time	continuous	General Description of Site Activities:												
Total Hrs Monitored	24	Relocated bin-blocks												
System Calibrations (Time/Status)	Ok 0649-0822	Health & Safety Meeting Continuous Air Monitoring Excavated in Temporary Fabric Structure (TFS) Decconned dump trucks Loaded out soil from TFS Tarped dump trucks												
Date	Alert Trigger	Station	Start Time	End Time	# of 15-min Periods	Wind Dir.	Upwind/Downwind	Upwind Station(s)	15-Minute Downwind-Upwind Concentration		Site Condition	Site Activity During the Period (if applicable)	Actions Taken	
11/21/2012	No exceedances								Min**	Max**			None taken	
Comments:														
					PM-10 (15-min)	TVOC (15-min)	TVOC (1-min)	Odor Intensity (15-min)						
					Alert Limit: 100 ug/m ³	3.7 ppm	-	-						
					Action Limit: 150 ug/m ³	5.0 ppm	25 ppm	3 (n-butanol scale)						
Notes:														
* Wind directions are presented by octant (i.e. N, NE, E, SE, S, SW, W, NW).					PM-10 - particulate matter (i.e. dust) less than 10 microns in diameter									
** Upwind minus downwind concentrations are a time specific comparison.					TVOC - total volatile organic compounds									
FAM - Fixed Air Monitoring station location					NA - not applicable					Field Representative: R. Marshall				
ug/m ³ - micrograms per cubic meter					ND - no data available					Date: 11/21/2012				
ppmv - parts per million by volume														
													Page 1 of _1_	

